

Pamaz[®]
Healthcare



Contemporary

Waterproof | Anti-Microbial | Anti-Fungal | Stain Resistant
Bleach Cleanable | Flame Retardant | Scratch Resistant



TREK
155 Duck Egg



TREK
219 Seafoam



TREK
105 Indigo



TREK
226 Lime



TREK
609 Rose



TREK
624 Mulberry



TREK
317 Soft Gold



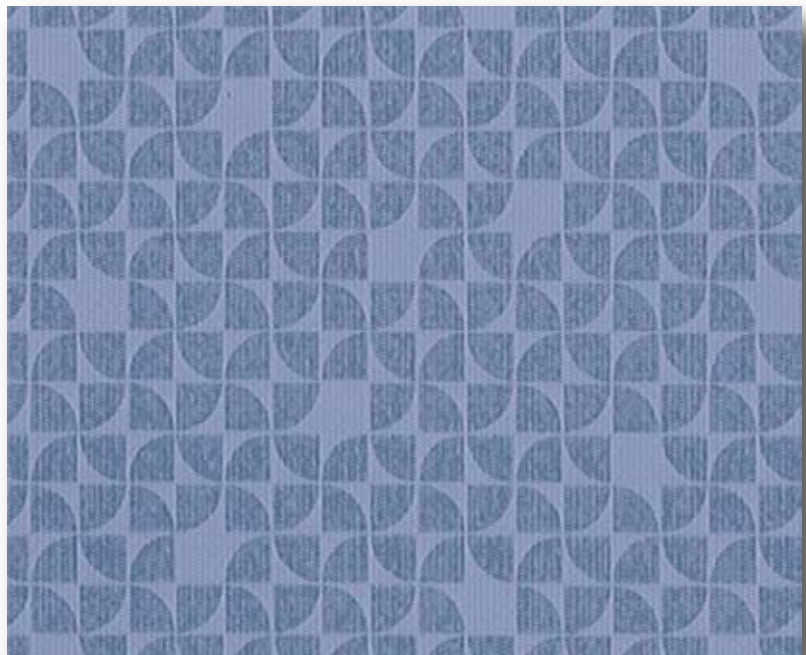
TREK
401 Amber



TREK
807 Mushroom



TREK
321 Wheat



TREK
198 Hyacinth



TREK
823 Chablis



VOYAGE
198 Hyacinth



VOYAGE
155 Duck Egg



VOYAGE
105 Indigo



VOYAGE
609 Rose



VOYAGE
624 Mulberry



VOYAGE
703 Mink



VOYAGE
401 Amber



VOYAGE
801 Tan



VOYAGE
807 Mushroom



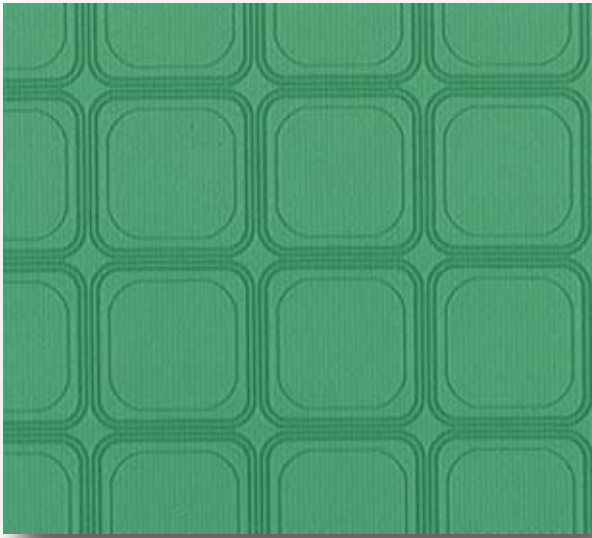
VOYAGE
317 Soft Gold



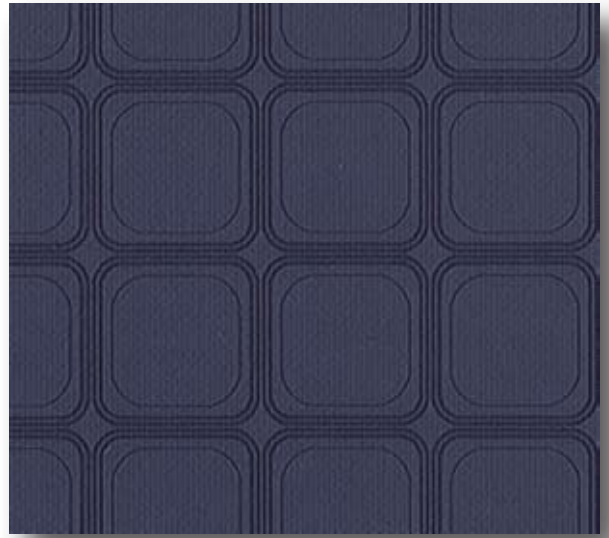
VOYAGE
321 Wheat



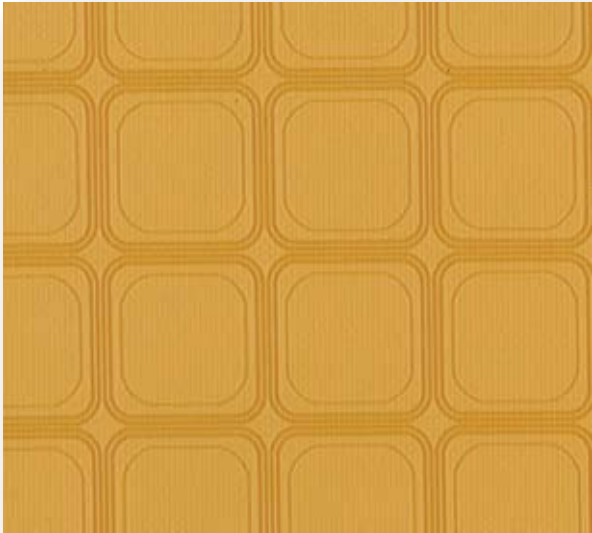
VOYAGE
823 Chablis



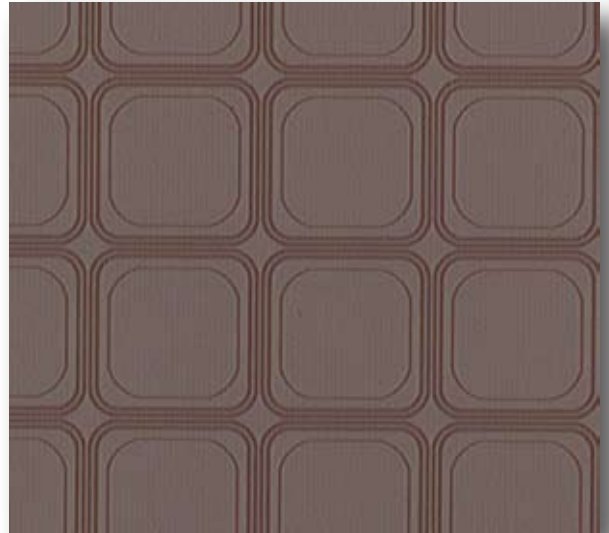
QUEST
219 Seafoam



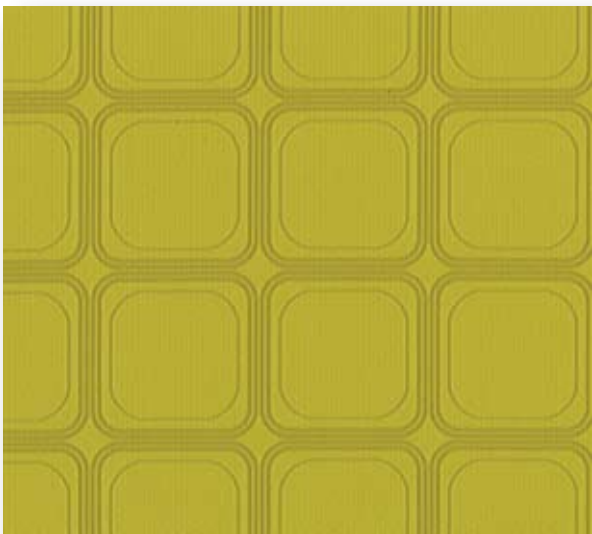
QUEST
105 Indigo



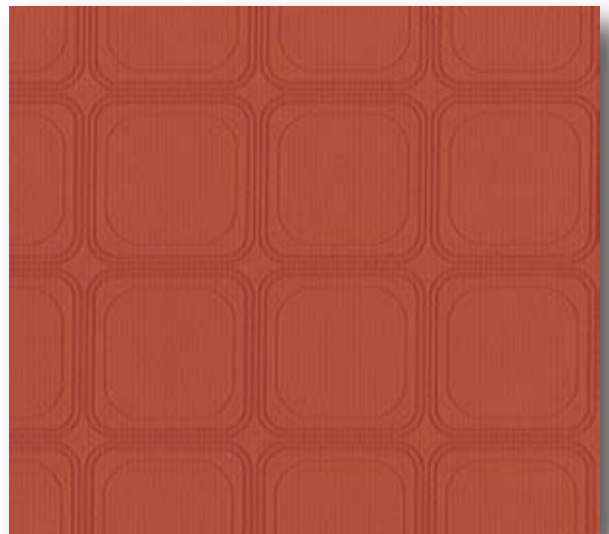
QUEST
317 Soft Gold



QUEST
703 Mink



QUEST
226 Lime



QUEST
437 Tuscan Red



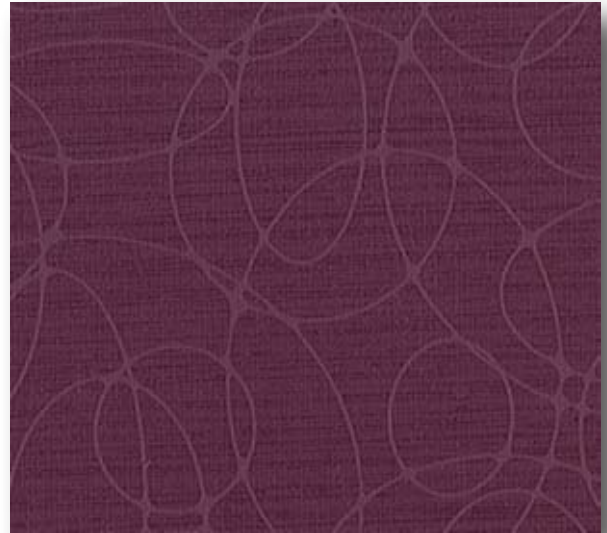
VENTURE
198 Hyacinth



VENTURE
609 Rose



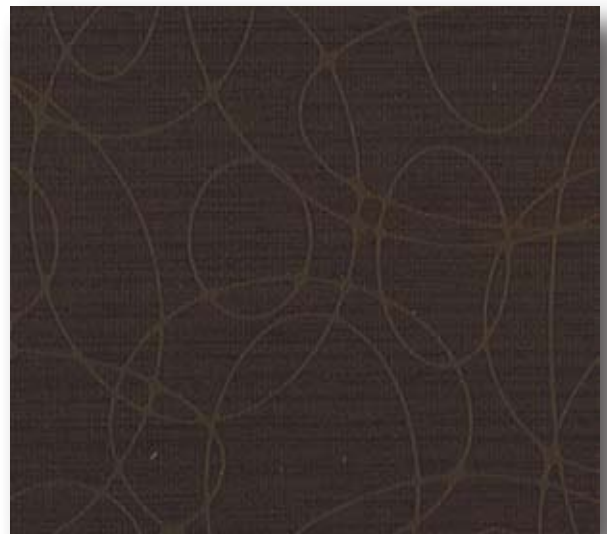
VENTURE
155 Duck Egg



VENTURE
624 Mulberry



VENTURE
321 Wheat



VENTURE
807 Mushroom



Technical Information

Composition :	Coating: 98% PVC, 2% PU Basecloth: 67% Polyester , 33% Cotton
Weight :	720 g/m ²
Width :	137cm (54")
Flammability:	BS5852:2006: Section 4: Ignition Source 5: tested with CMHR foam EN1021.2 NFPA 260
Abrasion Resistance :	100,000+ Martindale rubs
Light Fastness :	4-5
Colour Fastness :	Wet 4, Dry 4
Features:	High scratch resistance - colour solid to the basecloth.

Anti-Microbial and Anti-Fungal Protection. Tested to AATCC147. Cadet is effective against a broad spectrum of bacteria and fungi including:

Bacillus cereus	Bacillus subtilis
Bacillus mycoides	Escherichia coli
Enterococcus faecalis	Klebsiella pneumoniae
Proteus vulgaris	Pseudomonas aeruginosa
Salmonella typhimurium	Salmonella choleraesuis
Staphylococcus aureus	

Cadet can be cleaned with a 5% dilution of bleach to aid infection control.

Recommended Cleaning :

- Clean and care for the fabric on a regular basis and it will maintain its condition and appearance. Most stains can be removed by wiping clean.
- The new generation of microfibre cleaning cloths are extremely effective **with or without** soap for general care and maintenance.
- Wipe clean regularly with a damp cloth to remove dust particles and light soiling.
- Remove spillages promptly (within 15 minutes) with an absorbent dry cloth.
- For heavier soiling, use a soft brush with care to avoid abrasive damage to surface and tepid soapy water (non-alkaline). Rinse clean with clear water. Dry with an absorbent cloth.
- Bodily fluids should be removed promptly (within 15 minutes) with cold water and then cleaned as above.
- Extreme soiling/infection control use a 5% sodium hypochlorite (bleach) solution.
- Do not machine wash or dry clean.
- Do not use polish, solvents or stain remover.

Continuity:

Although every effort is made to ensure that fabrics ordered match the colours in this pattern card, slight variations may occur from batch to batch.

Please note Panaz reserve the right to update product specification at their discretion.



Certificate No: 2358



BS5852
CRIB 5
EN1021/2

Panaz[®]
Healthcare

For further information please visit
www.panaz.com

Head Office.

Panaz Ltd, Spring Mill, Fence, Near Burnley, Lancashire. BB12 9HP England
Tel: +44 (0) 1282 696969 Fax: +44 (0) 1282 611519
email: admin@panaz.co.uk

Panaz Germany
Nortzstrasse 20
67152 Ruppertsberg
Germany

Tel: +49 6326 967 528
Fax: +49 6326 980 553
email: Uwe.Ney@t-online.de

Panaz France
2 Passage Flourens,
75017 Paris
France

Tel: +33 (0)6 07 62 21 19
Fax: +33 (0)1 40 25 09 64
email: patrick.martinez@noos.fr

Panaz Holland
Rosebank Projekttextiel
Hooigracht 42
2514 BG The Hague
Holland

Tel: +31 70 392 4565
Fax: +31 70 356 9585
email: rosebank@planet.nl



Panaz (USA) Inc
2102 Business Center Drive
Suite 215B
Irvine, CA 92612
USA
Tel: +1 949 253 4163
Fax: +1 949 253 4167
email: sales@panaz.com